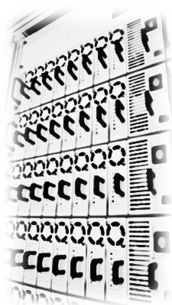




TPT-B1C/B4C Series 5V/20V Battery Pack Charge / Discharge Equipment

1. Complete independent module design

- Single independent module design.
- Independent channel control module.
- Single independent module installation.
- Meet the different characteristics of the batteries charge and discharge requirements, channel number to ensure uniqueness of the modules.
- The user can expand and removed quickly through the device manager of new hardware installation and uninstallation.
- Our after service is based on modular maintenance, efficiency and easy.

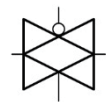


2. Long life design

A semiconductor switch is designed internal of modules, no life limited like mechanical contact, no arcing damage from switch high voltage. We ensure the equipment is running steadily and continuously for long time, so effectively extend the service life of equipment. Standard warranty for this series of products is two years.



✗ Limited life time under mechanical Contact



○ Long life time under semiconductor switch

3. ±0.02% High precision output and measurement

THINK POWER provide the user with a different equipment experience and excellent cost performance comparable to high precision equipment which made in USA, Europe and Japan. Either charge or discharge mode, we guarantee the high precision of the output and measurement accuracy.

± 0.02 %

Voltage

Current

Temperature

Power

Capacity

4. Multi-communication & Support SCPI command control (GPIB)

The user can control the machine by ThinkLab software, also through the SCPI communication instruction to write the software by their self. And application of SCPI instructions directly, proceed the equipment operation control. To support the use of equipment that maximizes flexibility.

RS-485

+

USB

+

ThinkLab

+

SCPI

Model		TPT-B1C0505B	TPT-B1C1010B	TPT-B1C2020B	TPT-B1C5050B	TPT-B4C0505B	TPT-B4C1010B		
Load Range		5V ±5A	5V ±10A	5V ±20A	5V ±50A	20V ±5A	20V ±10A		
		25W	50W	100W	250W	100W	200W		
AC Input		AC 230V/4A	AC 230V/6A	AC 230V/11A	AC 230V/20A	AC 230V/8.5A	AC 230V/10A		
Channels		10 Chs/Box			6 Chs/Box	10 Chs/Box	6 Chs/Box		
Output Function	Charge	CC、CC-CV、CC-CP	CC、CC-CV、CC-CP	CC、CC-CV、CC-CP	CC、CC-CV、CC-CP	CC、CC-CV、CC-CP	CC、CC-CV、CC-CP		
	Discharge	CC、CC-CV、CC-CP	CC、CC-CV、CC-CP	CC、CC-CV、CC-CP	CC、CC-CV、CC-CP	CC、CC-CV、CC-CP	CC、CC-CV、CC-CP		
Output	CC	Range	+5A/-5A	+10A/-10A	+20A/-20A	+50A/-50A	+5A/-5A	+10A/-10A	
		Resolution	1mA	1mA	1mA	1mA	1mA	1mA	
		Accuracy	± 0.02% F.S.	± 0.02% F.S.	± 0.02% F.S.	± 0.02% F.S.	± 0.02% F.S.	± 0.02% F.S.	
	CV	Range	Charge	-1.0V ~ 5.0V	-1.0V ~ 5.0V	-1.0V ~ 5.0V	-1.0V ~ 5.0V	-1.0V ~ 20.0V	-1.0V ~ 20.0V
			Discharge	2.0V ~ 5.0V/L=1.5M				3.0V ~ 20.0V/L=1.5M	
		Resolution	1mV	1mV	1mV	1mV	1mV	1mV	
		Accuracy	± 0.02% F.S.	± 0.02% F.S.	± 0.02% F.S.	± 0.02% F.S.	± 0.02% F.S.	± 0.02% F.S.	
	CP	Range	± 25W	± 50W	± 100W	± 250W	± 100W	± 200W	
		Resolution	0.1W	0.1W	0.1W	0.05W	0.01W	0.1W	
		Accuracy	± 0.05% F.S.	± 0.05% F.S.	± 0.05% F.S.	± 0.05% F.S.	± 0.05% F.S.	± 0.05% F.S.	
	Measurement	Voltage	Range	0 ~ 5.1V	0 ~ 5.1V	0 ~ 5.1V	0 ~ 5.1V	0 ~ 20.6V	0 ~ 20.6V
			Resolution	0.1mV	0.1mV	0.1mV	0.1mV	0.1mV	0.1mV
Accuracy			± 0.02% F.S.	± 0.02% F.S.	± 0.02% F.S.	± 0.02% F.S.	± 0.02% F.S.	± 0.02% F.S.	
Current		Range	0 ~ 5.2A	0 ~ 10.3A	0 ~ 20.6A	0 ~ 51.5A	0 ~ 5.2A	0 ~ 10.3A	
		Resolution	0.1mA	0.1mA	0.1mA	0.1mA	0.1mA	0.1mA	
		Accuracy	± 0.02% F.S.	± 0.02% F.S.	± 0.02% F.S.	± 0.02% F.S.	± 0.02% F.S.	± 0.02% F.S.	
Temperature		Range	-30°C ~ 0°C ≤ ±1°C ; 0°C ~ 100°C ≤ ±0.5°C ; 100°C ~ 140°C ≤ ±1°C						
		Resolution	0.1°C	0.1°C	0.1°C	0.1°C	0.1°C	0.1°C	
		Accuracy	± 1°C	± 1°C	± 1°C	± 1°C	± 1°C	± 1°C	
Voltage Sense	4 Wire remote sensing compensates voltage drop on the load wiring up to 0.5V. Voltage sensing wire off automatic compensation.								
Output Protection	Over voltage、Under voltage、Over current、Under current、Over temperature、Reverse polarity、Fuse								
Heat Sink Protection	Heat sink overheat detection stop								
Charge/Discharge switch life	> 10 ⁴ 12 ; Unlimited number of charge/discharge switches, 5 Years warranty								
Communication Port	RS485 ; BR=115,200 ; Isolated ±15KV ESD								
Communication protocol	USBTMC & SCPI Compatible								
Dimension (W x H x D)mm	430W x 220H x 320D (mm)			430W x220H x 510D(mm)	430W x220H x 320D(mm)	430W x220H x 380D(mm)			
Operating Environment	10 ~ 40°C ; 20 ~ 90 %HR								

Note1 : Same as DC Load features. Voltage of battery is under 1.5V, the discharge current will presence drop by a linear mode, until the voltage and current is 0V、0A.
The voltage's lower range value can be lower, when the holding wire length is smaller than test specification value.

* F.S. = Full Scale


Peripheral Devices

	Model	Specification
1	TPT-G500A	I ² C、SMBus、HDQ 3-in one Gas Gauge Box ; Single channel
2	TPT-CG830A	I ² C、SMBus、HDQ 3-in one Gas Gauge Box ; Multi-channel
3	TPT-SV2016A	CellV Voltage scanning Box ; ± 20V x 16Ch
4	TPT-SV0516A	CellV Voltage scanning Box ; ± 5V x 16Ch
5	TPT-TMS16A	CellT Temperature scanning Box ; -30°C ~ 200°C ; K Type
6	TPT-TMS16B	CellT Temperature scanning Box ; -30°C ~ 140°C ; Thermistor Type
7	TPT-SW3015A	2W Input Change 4W Output · Charge and discharge separation module ; 20V/15A

Services :

- Free Hard / Software update
- Free online technology support service

Warranty :

- One year warranty

Think Power Technology Co., Ltd.

6F.,No.12,Wuquan 7th Rd., Wugu Dist.,
New Taipei City, 24890, Taiwan.
TEL : +886-2-22902095
FAX : +886-2-22900586
mail : sales@think-power.com.tw
www.think-power.com.tw

DM specifications are subject to change without notice.